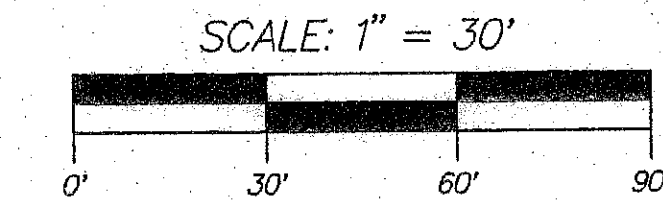


MORSE DELRAY TOYOTA RE-PLAT

BEING A REPLAT OF LOTS 1 AND 2, MORSE SATURN DEALERSHIP
(PLAT BOOK 65, PAGE 107) AND TRACT B, DELRAY MAZDA (PLAT BOOK
64, PAGE 21), BEING IN SECTION 29, TOWNSHIP 46 SOUTH, RANGE
43 EAST, CITY OF DELRAY BEACH, PALM BEACH COUNTY, FLORIDA

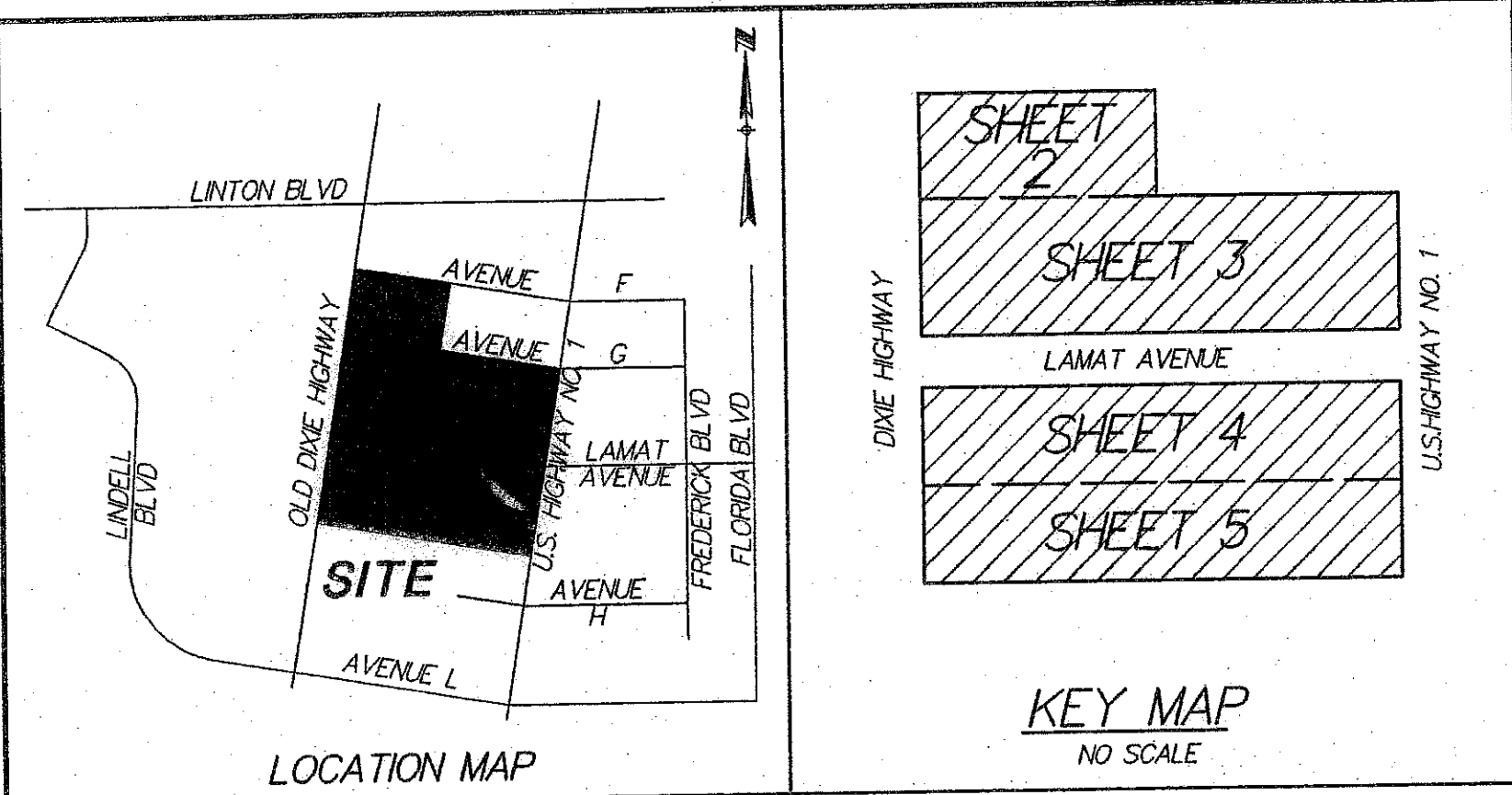
AUGUST 2006
SHEET 4 OF 5



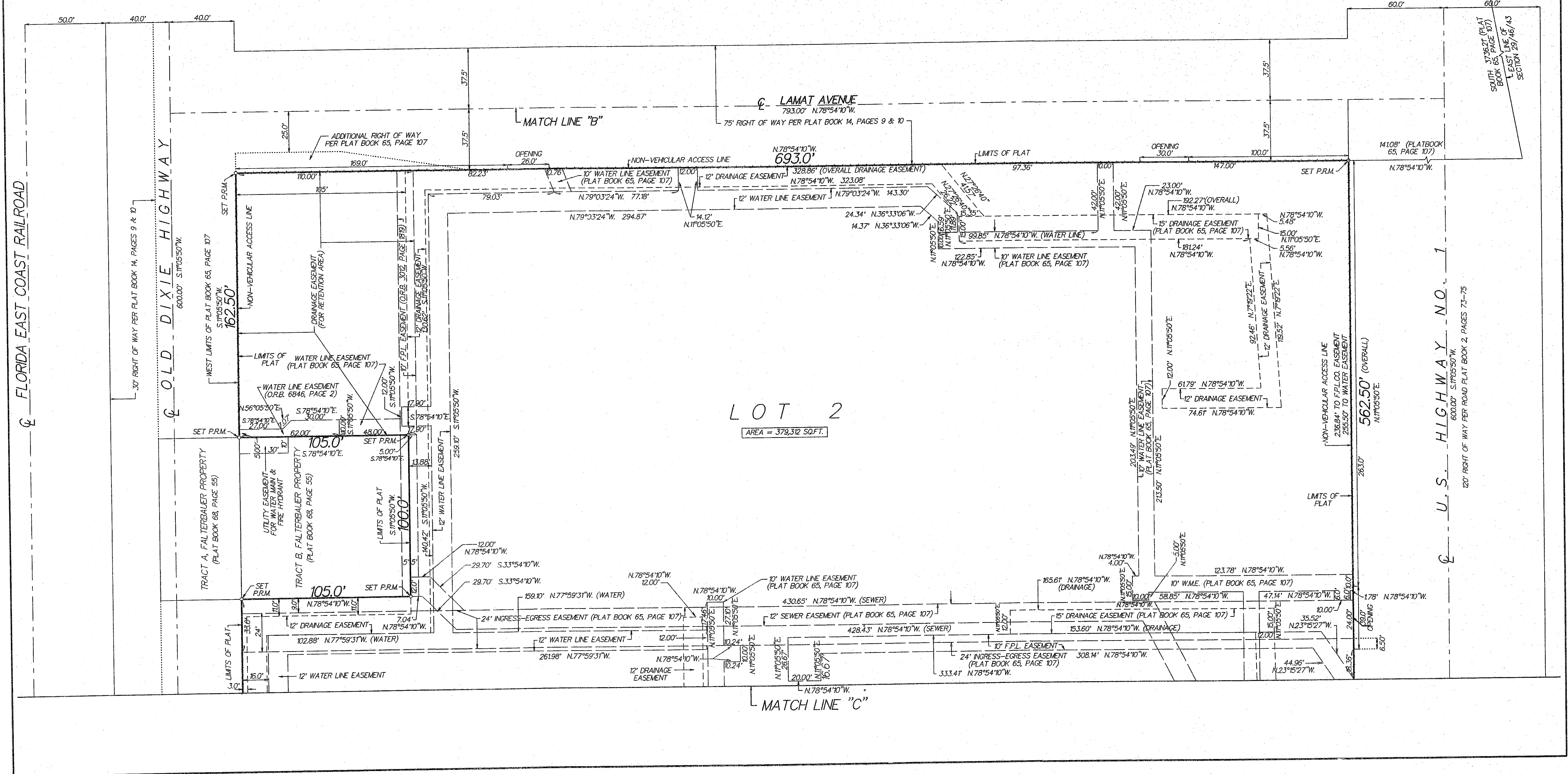
116

COUNTY OF PALM BEACH
STATE OF FLORIDA

THIS PLAT WAS FILED FOR RECORD AT _____
THIS _____ DAY OF _____
20____, AND DULY RECORDED IN PLAT BOOK NO. _____
ON PAGE _____
SHARON R. BOCK, CLERK OF CIRCUIT COURT
AND COMPTROLLER.
BY _____ D.C.



- LEGEND:
- ☉ = CENTERLINE
 - O.R.B. = OFFICIAL RECORD BOOK
 - F.P.L.CO. = FLORIDA POWER & LIGHT COMPANY
 - W.M.E. = WATER MAIN EASEMENT
 - P.R.M. = PERMANENT REFERENCE MONUMENT
(4"x4" CONCRETE MONUMENT STAMPED
"PRM LB353")



NE CORNER OF
SECTION 29/46/43
(PER PLAT BOOK 65,
PAGE 107)

SOUTH 37.5' FOOT (PLAT
BOOK 65, PAGE 107)
EAST LINE OF
SECTION 29/46/43

U.S. HIGHWAY NO. 1
120' RIGHT OF WAY PER ROAD PLAT BOOK 2, PAGES 73-75

FLORIDA EAST COAST RAILROAD
30' RIGHT OF WAY PER PLAT BOOK 14, PAGES 9 & 10

OLD DIXIE HIGHWAY
600.00' S.11°05'50\"/>

WEST LIMITS OF PLAT BOOK 65, PAGE 107
S.11°05'50\"/>

TRACT A, FALTERBAUER PROPERTY
(PLAT BOOK 68, PAGE 55)

UTILITY EASEMENT
FOR WATER MAIN &
FIRE HYDRANT

TRACT B, FALTERBAUER PROPERTY
(PLAT BOOK 68, PAGE 55)

LIMITS OF PLAT
S.11°05'50\"/>

12\"/>

12\"/>

12\"/>

12\"/>

12\"/>

12\"/>

12\"/>

12\"/>

12\"/>

12\"/>

12\"/>

12\"/>

12\"/>

12\"/>

12\"/>

12\"/>

12\"/>

12\"/>

12\"/>

12\"/>

12\"/>

12\"/>

12\"/>